



**GUANGZHOU GUANGZHONG  
ENTERPRISE GROUP CORP.**

**GUANGZHOU GUANGZHONG  
ENTERPRISE GROUP CORP.**

Address: NO.4 Pingshan road, 105 national road, Shibi street,  
Panyu district, Guangzhou

Tel : (020) 31177268

Website : [www.gzhm.com](http://www.gzhm.com)

**After-sales department**

Tel : 020-31177518

Code : 511495

**Sales department for steam turbine**

Tel : 020-31177822

Fax : 020-31177368

**Sales department for boiler**

Tel : 020-84539893 020-84539892 020-84539899

Fax : 020-84539898

**Sales department for generator**

Tel : 020-84539785 020-84539786

**Sales department for centrifuge**

Tel : 020-84369817 020-84328888

Fax : 020-84337014

2020.03





In 1956, chairman Mao Zedong visited GGEGC

## Content

- 01 Introduction
- 02 Credentials Organization
- 03 Products
- 05 Manufacturing capacity
- 07 Brilliant achievements
- 09 Prospects

## Introduction

Guangzhou Guangzhong Enterprise Group Corp (formerly Guangzhou heavy machinery factory, founded in 1948) is the backbone in China's machinery industry, is the core enterprise in Guangzhou intelligent equipment industry group, is the key equipment manufacturing state-owned enterprise in Guangdong province.

The company is under the care of all levels of government. Mao Zedong, Zhu De, Zhou Enlai and other leaders of the older generation of the party and state, and leaders of Guangdong province and Guangzhou city have visited the company for inspection, research and guidance.

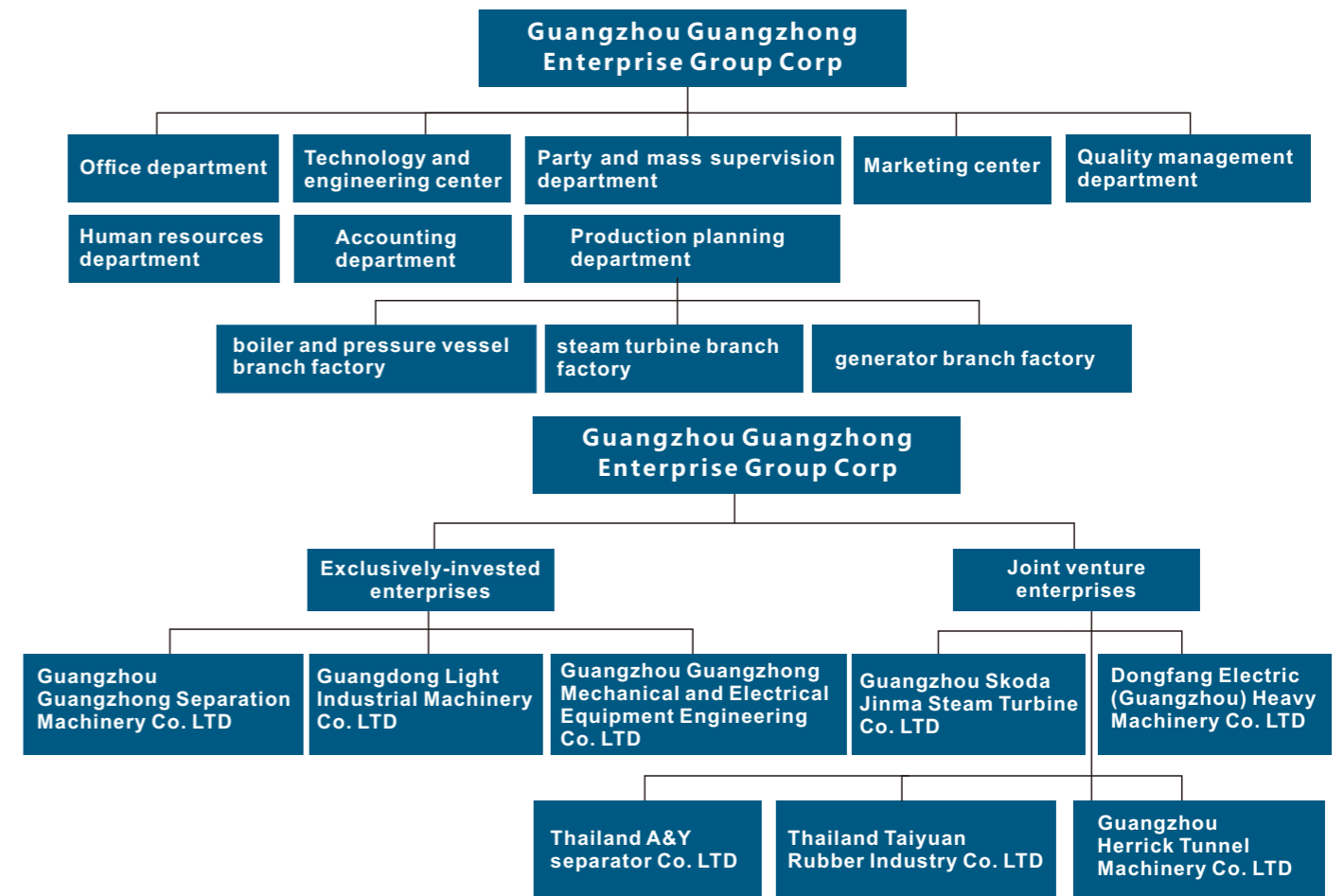
The company has three major manufacturing bases of Shibi base in Panyu area, Dagang base in Nansha area and Huangpu base in Zhongshan area in Guangzhou city, covering the area of 800,000 square meters. The headquarter of the company is located in Pingshan road 4 of 105 national road of Shibi street of Panyu district of Guangzhou city, with geographical advantage. Since the establishment, the company has been focusing on the heavy machinery equipment manufacturing, with the capacity of designing, manufacturing, installation and maintenance of large sets of mechanical equipment. The company has made important contributions to China's economic development, and the products are sold all over China and exported to more than 20 countries and regions in the world.

The company has the design and manufacturing qualification recognized by authoritative institutions, has excellent processing equipment and manufacturing capacity, has the enterprise technology center recognized by Guangdong province, the key engineering technology research and development center in Guangzhou city, is a national high-tech enterprise, innovative enterprises in Guangzhou city.

Adhering to the corporate culture of "striving and innovating" and carrying forward the spirit of artisans, the company has carefully tailored every product for customers and provided excellent after-sales service.



## ORGANIZATION



## CREDENTIALS

The company has a complete quality assurance system, the design and manufacturing qualification has been recognized by domestic and international authoritative institutions, the main qualification certificates obtained are:

Issued by the state administration for quality supervision, inspection and quarantine

Pressure vessel design permit for class A1, A2 and A3, Pressure vessel manufacturing license for class A1, A2;

Boiler manufacturing license for class A;

Issued by accreditation center of China ISO9001:2008 quality system certification;

Employee health and safety management system certification;

Environment management system certification;

Issued by construction committee of Guangzhou city, China Second-level enterprise qualification certificate for steel structure and grid construction;

Issued by ASME in America four seal certificates of U. U2.S.PP





# PRODUCTS

The company's featured products are heavy machinery, petroleum chemical industry equipment and large excess pressure vessel, power generation equipment (including turbine, boiler, generator for cogeneration, biomass, waste incineration power generation, waste heat power generation), tunnel boring machine (TBM), all kinds of centrifugal separator, complete sets of equipment of sugar manufacturing, paper making equipment, large port equipment, large steel structure, all kinds of general machinery, environment protection equipment, large castings and forgings, etc; it has provided the high quality equipment for oil fields in Daqing, Shengli, Bohai in China and Guangzhou petrochemical, Maoming petrochemical, Yangzi petrochemical and other large petrochemical enterprises and the mills, big ports, incinerators, subways, highway tunnel engineering, large-scale bridge engineering, sewage treatment projects, the national space projects, making the important contribution to China's machinery manufacturing.



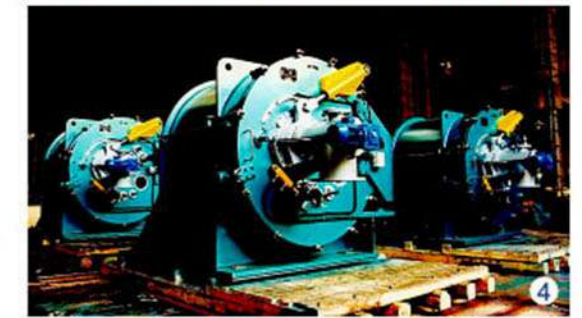
1 Tunneling equipment



2 Generator



3 Waste heat boiler for waste incineration



4 Centrifugal separator



5 Excess pressure vessel

6 Steam turbine



7 150 ton Bagasse Boiler



# MANUFACTURING CAPACITY

The company has great ability in mechanical manufacturing, has  $\Phi 16$  m CNC vertical lathe,  $\Phi 6.3$  m CNC vertical lathe, 2200 t hydraulic press, narrow gap automatic welder, 6 Mev, 9 Mev inspection equipment, large heat treatment furnace, diaphragm wall automatic production line, coil automatic production lines and other large, precise equipment for hot and cold processing . The lifting capacity of the workshop reaches 600t (300t x 2), and it has the 1500t port, meeting the requirements of manufacturing, installation and transportation of various large and precise machinery and equipment.



Large machining workshop



Dh8 high speed dynamic balancing machine



CNC composite machining center



Large three - roll plate roller



CNC cutting machine



Membrane wall welding production line





# BRILLIANT ACHIEVEMENTS

Over the past 70 years, the company has produced numerous high-quality machinery and equipment at home and abroad, and has more than 20 products that are ranking first in the province and in the country, leading in the industry, and even in Asia and in the world. These brilliant achievements are the concentrated embodiment of Guangzhong's great manufacturing capacity and the important contributions to the country, as well as the essence of the spirit "striving and innovating" of the staffs in Guangzhong and the craftsman's character of striving for perfection.



- In 1950 making the first batch of molten steel in Guangdong province
- In 1954 trial-producing the China's first centrifuge, becoming the earliest manufacturer of separation machinery in China
- In 1956 trial-producing the complete set of equipment for the 2,000-ton sugar mill per day, the largest in Asia, ending the history that China could not manufacture the complete set of sugar factory equipment
- In 1960 making the first furnace of stainless steel in Guangdong province
- In 1963 trial-producing the China's first rotary drum vacuum filter
- In 1964 trial-producing the China's first vinegar machine, ensuring the smooth production of China's first film factory
- In 1983 trial-producing the largest sugar mill press unit in Asia, making 12,000 tons of sugar cane per day, exporting to Thailand
- In 1986 trial-producing the China's first new type of 17-4ph martensite high strength precipitation hardening stainless steel for aerospace industry; trial-producing the titanium single atmospheric diving suit, the only one in China, and the rare one in the world; trial-producing the China's first titanium acetic acid dehydrating tower
- In 1988 manufacturing and installing the first rotating restaurant in China -- the rotating restaurant of Fu Hua Hotel in Zhongshan city, Guangdong province; trial-producing the first big pot -- hot-pressing machine for the space industry (5 m Φ L12.5 m, W100t)
- In 1989 making the new generation G 'm50/3-5 drum vacuum filter in China
- In 1992 making the China's largest XJK1320 upper suspension centrifuge
- In 1993 making the new kind of steel of ferritic + austenitic duplex stainless steel, the products with that in the leading position in China
- In 1994 making the high-speed train vibration test platform, the first one in China, the largest one in Asia, the third one in the world, making a major contribution to China's high-speed train development; winning the excellent product award in Guangdong province with the Fs-19-A chemical pulp washer
- In 1995 winning industrial science and technology progress award and excellent new product award in Guangdong province with the DRY-530 separator
- In 1997 winning excellent new product award in Guangdong province and the second prize of machinery industry science and technology progress in China with Sc8-27 level long net pulp washing machine
- In 1999 winning the excellent new product award and the second prize of technological progress of machinery industry in Guangdong province with the lithium bromide absorption chiller and heater; winning the excellent new product award in Guangdong province with the LI-b1525 ×4220×2 tire shaping vulcanizer
- In 2000 winning the third prize of excellent new product in Guangdong province with the vacuum phase change water heater
- In 2014 making the largest shield body in the world with diameter of 18 meters; making the largest pulp pre-leaching reaction tower in the world with diameter of 11.4 meters; making the strongest, thickest and heaviest slug catcher of its kind in China



# PROSPECTS

The company adheres to the development strategy as "innovation-driven, talent-led, lean management, Inclusive development and going abroad", relying on the three manufacturing bases of Shibi base in Panyu area, Dagang base in Nansha area and Huangpu base in Zhongshan area to realize linkage development. Based in south China, we will spread the country and even radiate the whole world.



## Shibi base in Panyu area

In the 200,000 square meters of Shibi base, we focus on the development of industry-leading steam turbine, boiler, generator equipment.



## Dagang base in Nansha area

In the 465,000 square meters of Dagang base, our emphasis is placed on the development of heavy-duty thick-wall vessels, large towers and other excess pressure vessels, marine engineering equipment and large tunneling equipment, represented by hydrogenation reactors.



## Huangpu base in Zhongshan area

In the 90,000 square meters of Zhongshan base, we strengthen the comprehensive supporting production capacity of "four-in-one" of smelting, forging, heat treatment and machining, and focus on the development of high-end large-scale casting and forging parts.

capacity of "four-in-one" of smelting, forging, heat treatment and machining, and focus on the development of high-end large-scale casting and forging parts.



- ① Shibi base in Panyu area
- ② Assembly shop in Shibi base in Panyu area
- ③ Huangpu base in Zhongshan area
- ④ Dagang base in Nansha area

